

SAN FRANCISCO

Housing Conservatorship Working Group

MEETING 2 • November 18, 2019 • 12:30PM-2PM • 1380 Howard RM 515





AGENDA

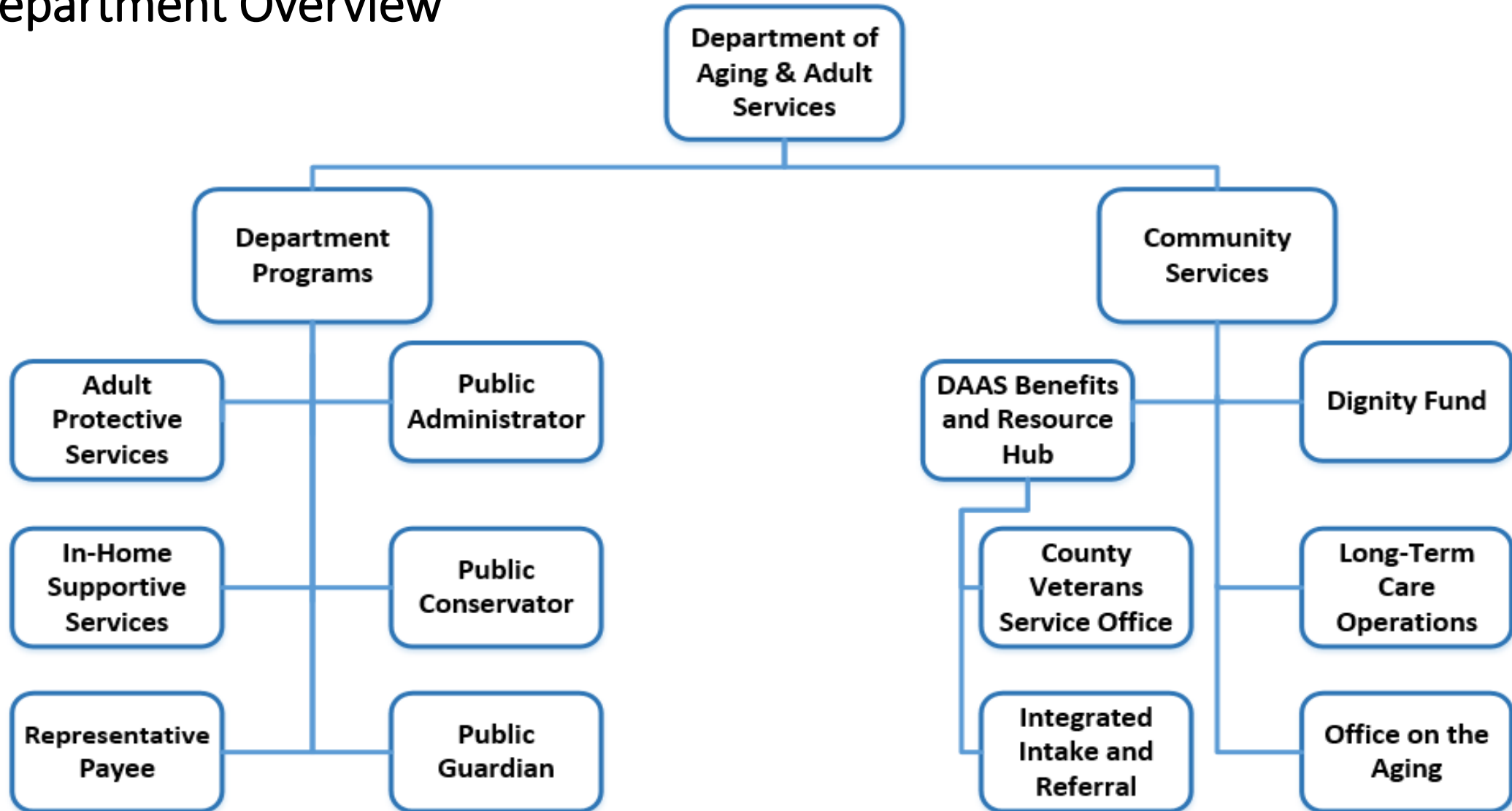
- Welcome & Agenda Review
- Office of Conservatorship Services
- Assisted Outpatient Treatment
- Overview of Program Flow
- Evaluation Update
- Public Comment
- Closing & Next Steps



Office of the Public Conservator

SF Department of Aging & Adult Services

Department Overview



Conservatorship Terms

LPS – Lanterman-Petris-Short Act – The conservatorship law from 1968 that was named after the bill's authors.

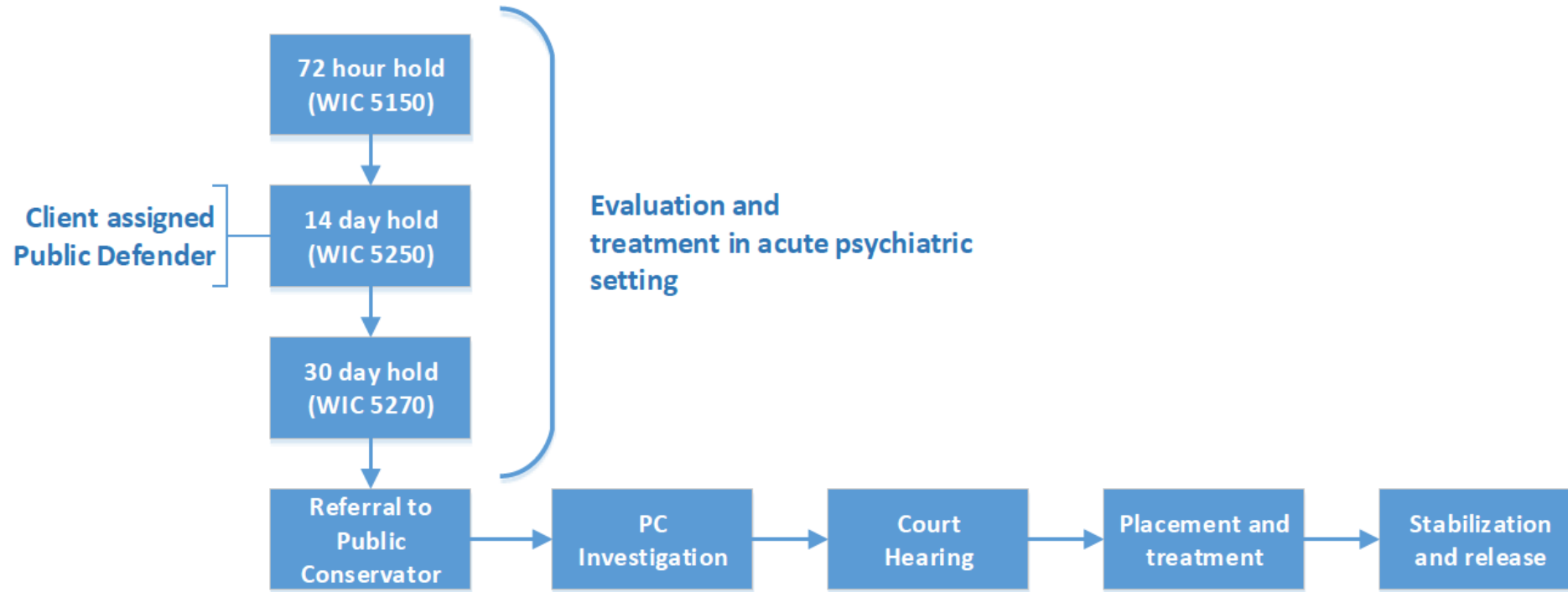
Mental Health Conservatorships – Another way to refer to LPS conservatorships that are overseen by the Office of the Public Conservator.

Public Guardian – The program that oversees probate conservatorships for adults with cognitive impairments and other types of serious functional disabilities.

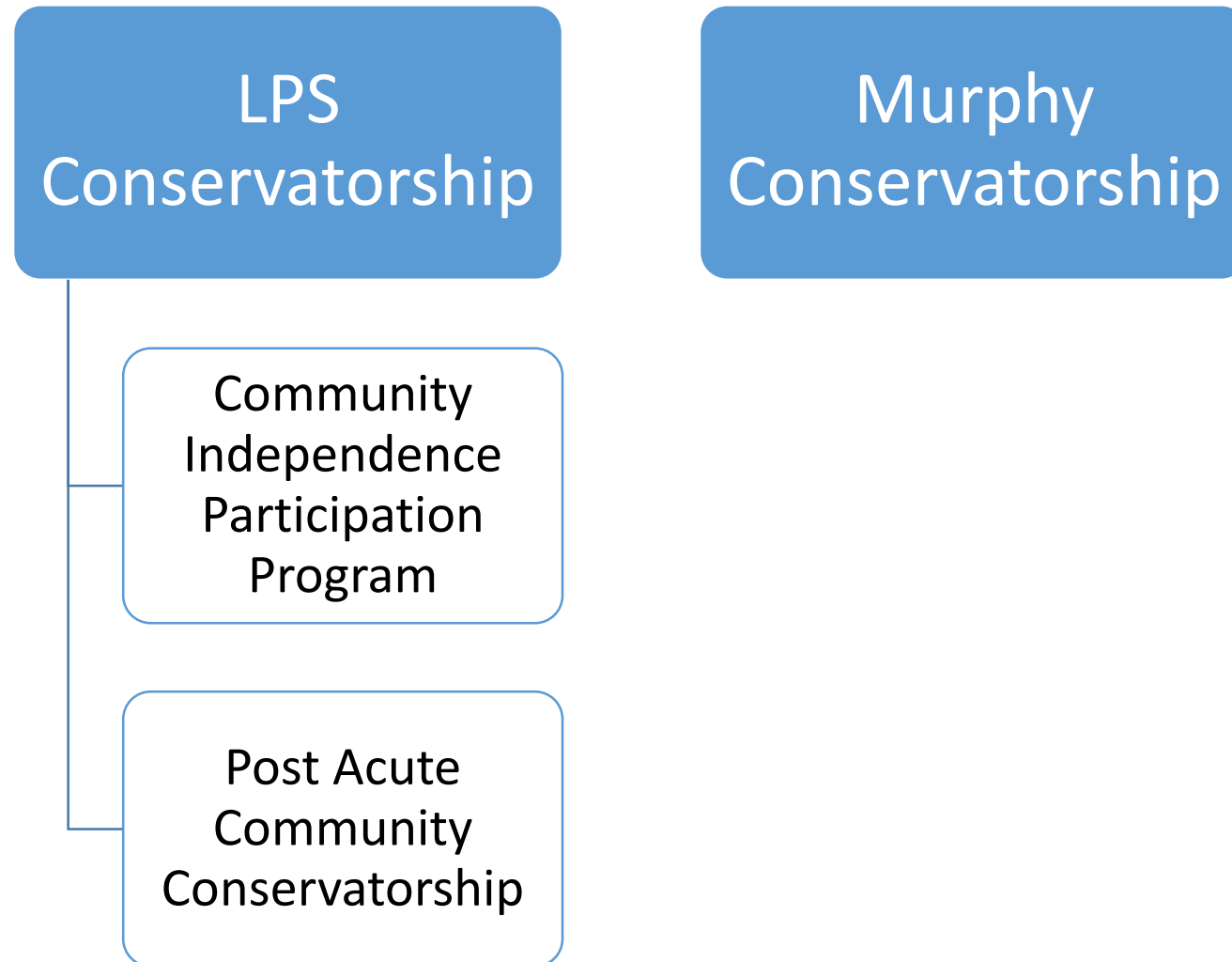
The **Office of the Public Conservator** is responsible for overseeing the psychiatric care of San Francisco residents who are *gravely disabled* due to mental illness and who have been found by the court unable or unwilling to accept voluntary treatment.

Grave Disability is the legal basis for involuntary commitment and refers to the inability of an adult to provide for their basic needs (food, clothing, shelter) due to impairment by mental illness or chronic alcoholism.

LPS Conservatorship Process



Mental Health Conservatorship Programs



Conservatorship Related Services

Investigate referrals for Conservatorship

Prepare reports for the Court

Recommend most appropriate level of care

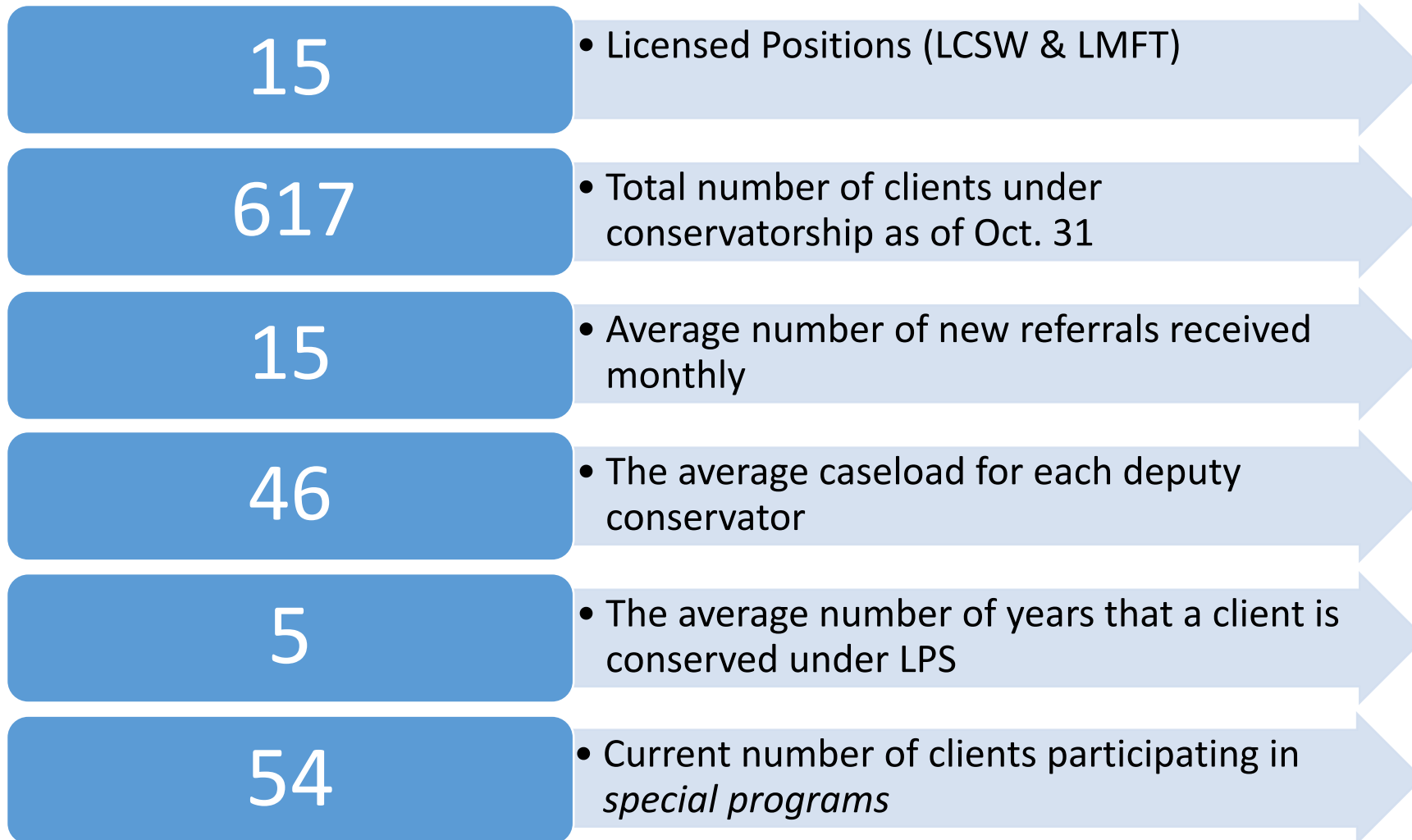
Monitor psychiatric care in collaboration with treatment team including responding to medication and involuntary medication order requests

Advocate on behalf of clients

Provide case management for clients placed out of county

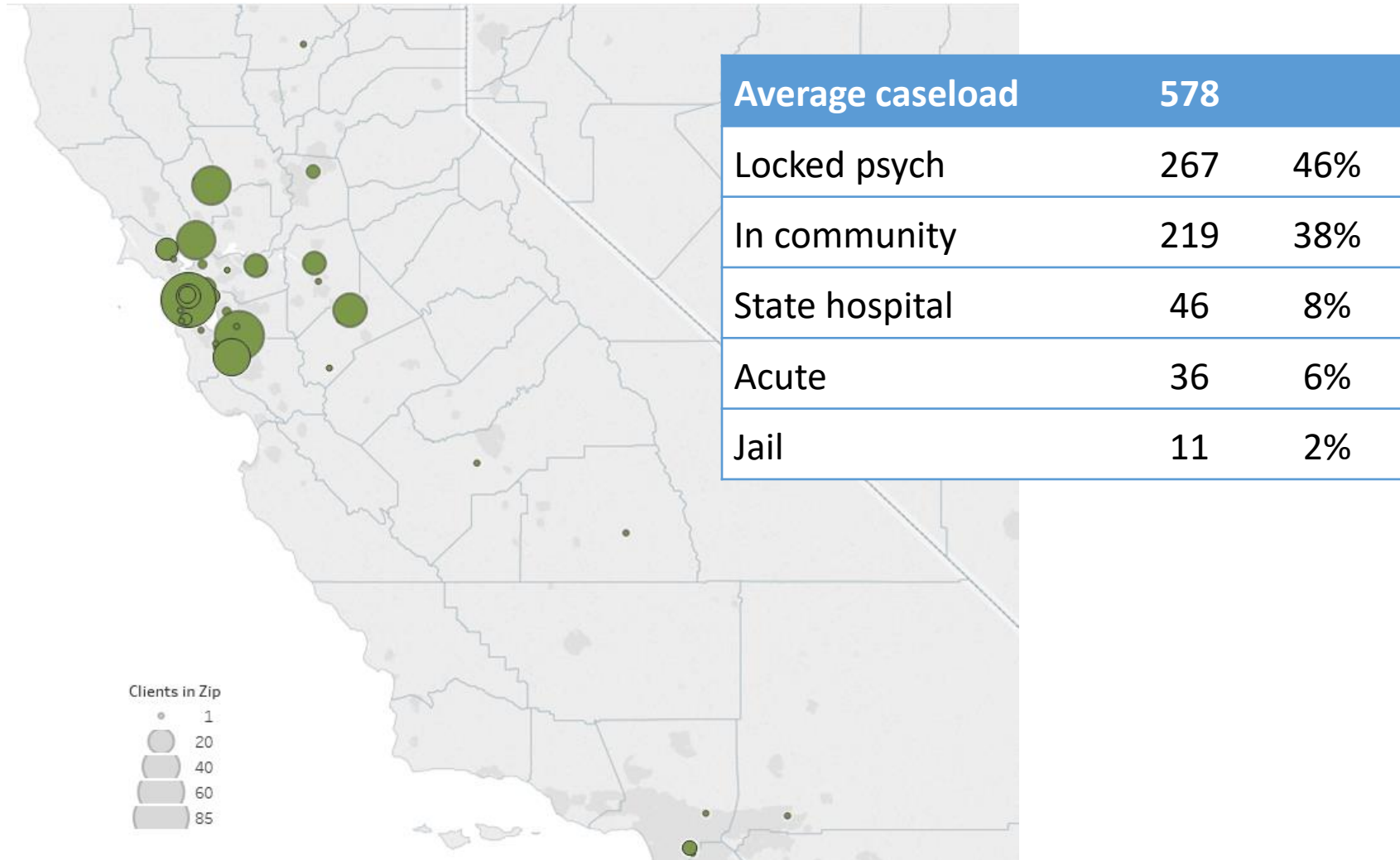
Collaborate with DPH/Transitions Team to ensure placement in least restrictive setting and for in-county case management services.

San Francisco's Office of the Public Conservator

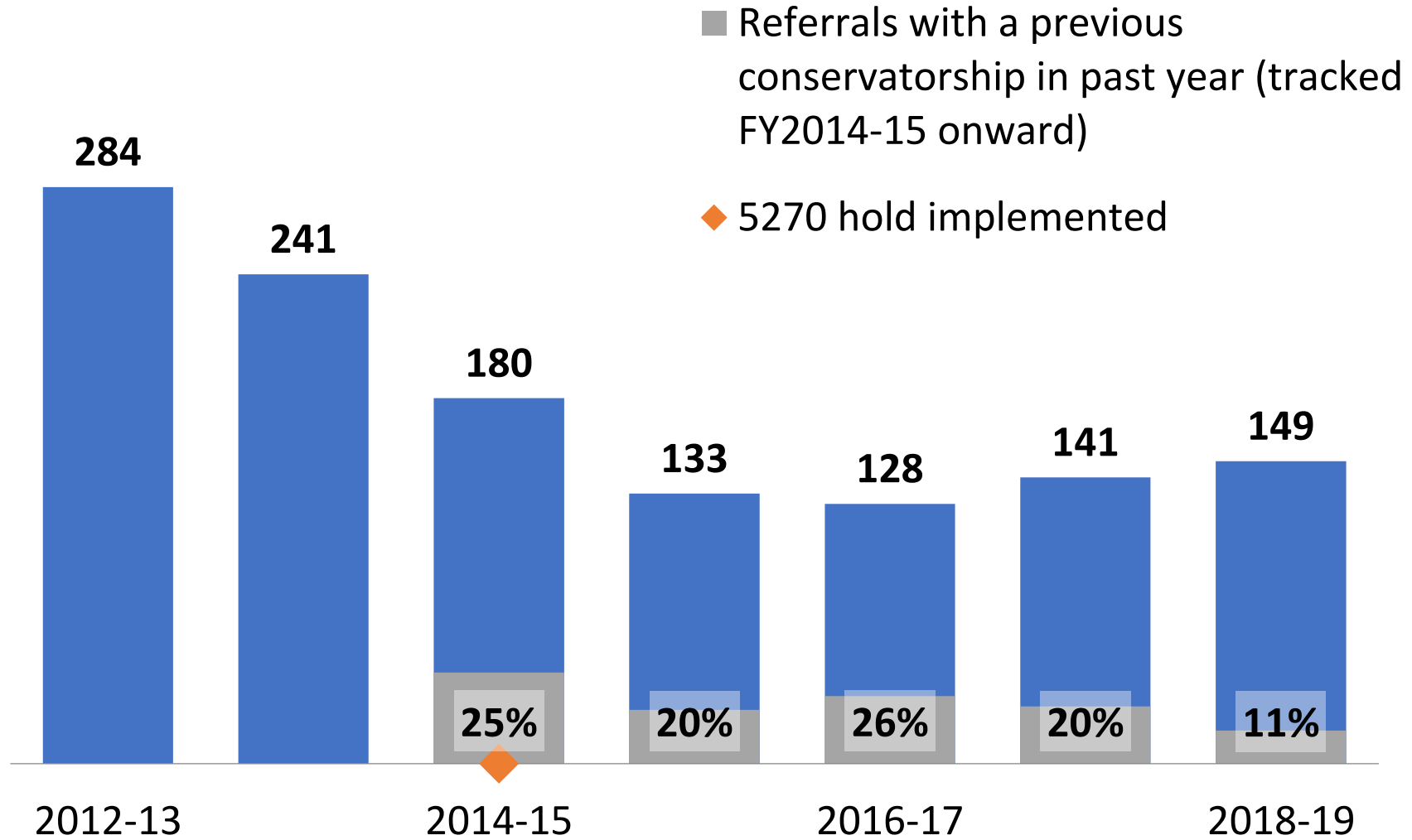


Placements

FY 2018-19



Referrals





Assisted Outpatient Treatment (AOT) and Housing Conservatorship

What is AOT?



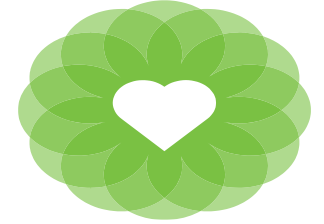
- Commonly known as “Laura’s Law”
- Has strict legal eligibility
- Court ordered outpatient treatment for individuals with severe mental illness
- Does not allow for forced treatment or forced medications
- Designed to assist individuals with severe and persistent mental illness who are not engaged in treatment, are deteriorating, and have a history of poor treatment compliance
- Goal of reducing hospitalization, incarceration, and victimization

San Francisco AOT



- **DPH Care Team** (outreach & engagement)
 - Program Manager (Psychologist)
 - Clinical Supervisor
 - Clinicians
 - Peer Specialist & Family Liaison
 - Clinical and Peer Interns
- **UCSF Citywide** (treatment provider)
 - Clinical Supervisor
 - Clinician
 - Psychiatrist
 - Nurse
 - Peer

AOT Primary Criteria

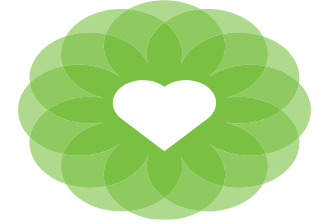


AOT Candidate must meet all criteria to be considered for the program.

Some of the criteria includes:

- Individual has a severe and persistent mental illness that is not the direct result of substance use
 - Individual is unlikely to survive safely in the community without support
 - Individual has a history of lack of compliance with treatment and is not currently engaged
 - An individual's:
 - mental illness has been a substantial factor in hospitalization or incarceration at least twice within the last 36 months
- ~OR~**
- mental health has led to one or more acts of violent behavior towards himself/herself or another, threats, or attempts in the last 48 months

AOT's Role in Housing Conservatorship

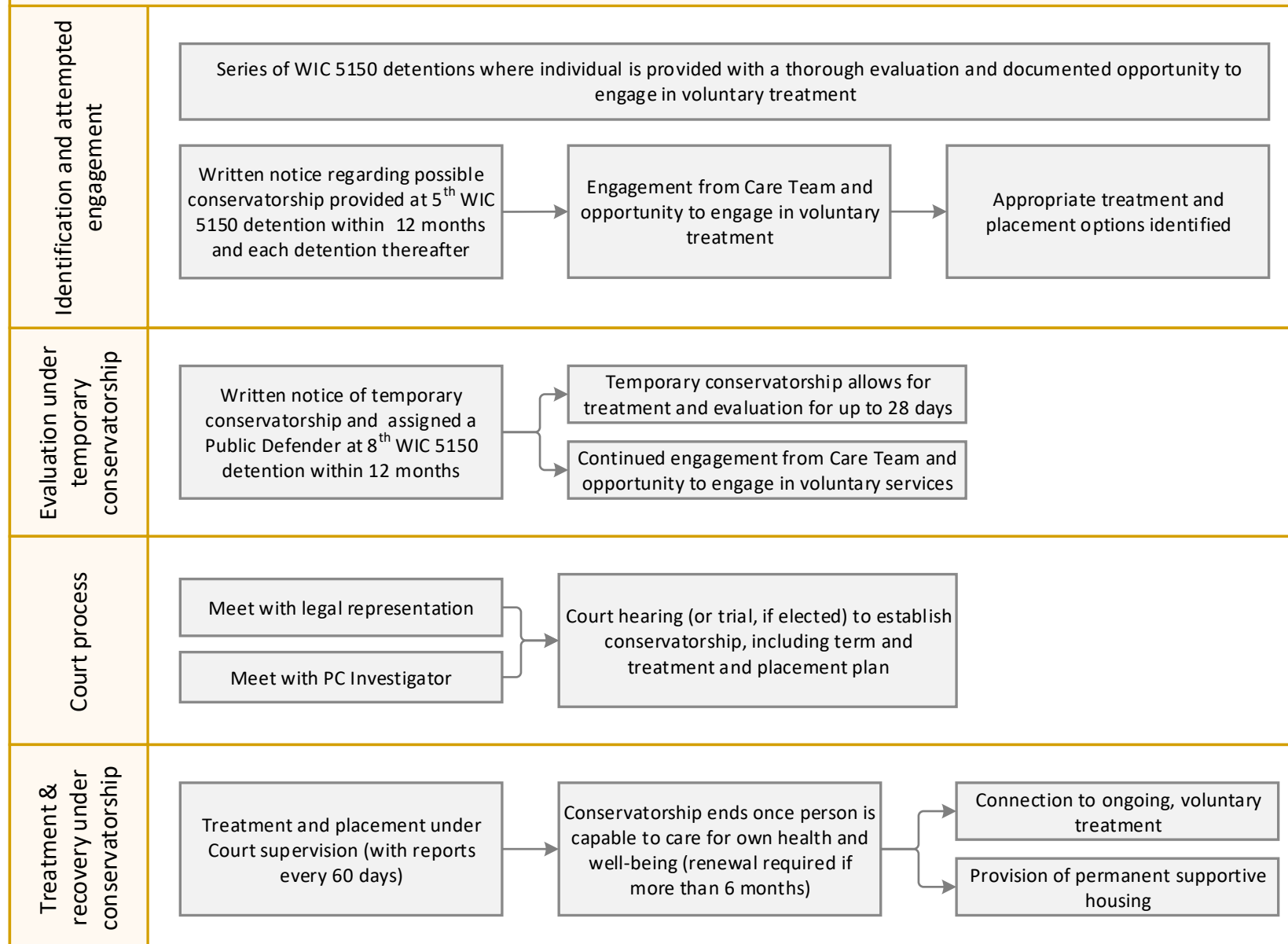


- Is an intervention and engagement tool with the goal of helping an individual voluntarily link to services
- Field based services
- Focused on recovery and wellness
- Full Service Partnership (intensive case management) between client and, when appropriate, their family/natural support system
- Goal of linking to long term and least restrictive services



Program Flow

Housing Conservatorship Process Overview





Population Data



Population Data- Fiscal Year 18/19

Information for individuals who had 4+ 5150's and seen at PES (117 individuals):

- Demographics
 - 30.8% between the ages of 40-50
 - 65.8% Male
 - 33.3% White
- Urgent/Emergent Services
 - 94% utilized urgent/emergent medical services
 - Average of 11.8 visits to PES



Population Data- Fiscal Year 18/19

- Linkage to Care
 - 24.8% had contact with primary care during FY
 - 24.8% have an assigned intensive case manager
 - 6.8% are currently LPS conserved
- Jail Contacts
 - 50.4% had a jail contact during FY
- Housing Status
 - 70.9% are known to have experienced homelessness in the last year
 - 31.6% have been assessed for Coordinated Entry



Evaluation Update

Evaluation Requirements from Health Code

Requirement	Data Point(s)	Partners
1. Number and status of persons who have been recommended for a Housing Conservatorship, evaluated for eligibility for a Housing Conservatorship, and/or conserved	-As described in requirement	DPH
2. The effectiveness of these conservatorships in addressing the short and long term needs of those persons, including a description of the services they received	<ul style="list-style-type: none"> -Description of treatment and services -Housing status -PES contact -Substance use treatment compliance -Incarceration -Individual experience survey 	DPH, HSA, HSH, ZSFG
3. The impact of conservatorships established on existing conservatorships and on mental health programs provided by the city	<ul style="list-style-type: none"> -Number of LPS conservatorships -Impact on mental health programs provided by the city (high level trends) 	HSA, DPH
4. The number of detentions for evaluation and treatment under Section 5150 that occurred in SF during the evaluation period, broken down by the type of authorized person who performed the detention	-As described in requirement	DPH Mobile Crisis, ZSFG, SFPD, Hospitals TBD
5. Where a detention under Section 5150 was performed by a peace officer, an explanation as to why the peace officer was the appropriate person to perform the detention	-Narrative description for each relevant 5150, or broader trends	SFPD

Anticipated Data Points for January Report

Population-level data:

- Number of 5150s, ideally broken down by type
- Insights from SFPD on officer-initiated 5150s (why, how, etc.)
- Timeframe: FY2018-19 (07/01/2018 – 06/30/2019)

Data sources:

- DPH
- SFPD
- Zuckerberg SF General
- Possibly other hospitals

Next Steps for January Report

- Share available data with Working Group at December 16 meeting
- Draft report
- Final report submission to Mayor and Board of Supervisors by January 21, 2020



PUBLIC COMMENT



Closing and Next Steps

Upcoming Working Group Meetings:

Date: Monday December 16th

Time: 12:30-2:00pm

Meeting will be held at 1380 Howard Street, Room 515



Information Sharing and Engagement

Email: Housing.Conservatorship-Workgroup@sfdph.org

Website Updates:

www.sfdph.org/dph/comupg/knowlcol/housingconserv/default.asp