



San Francisco Monthly STI Report

Data for October, 2021
Report prepared December 24, 2021

Table 1. STIs among residents, October, 2021. Female syphilis cases include patients assigned as female at birth.

| | 2021 | | 2020 | |
|------------------------|-------|-------|-------|-------|
| | month | YTD | month | YTD |
| Gonorrhea | 539 | 4,242 | 380 | 3,389 |
| Male rectal gonorrhea | 210 | 1,441 | 103 | 966 |
| Chlamydia | 531 | 5,059 | 460 | 4,829 |
| Male rectal chlamydia | 183 | 1,498 | 118 | 1,329 |
| Syphilis (adult total) | 140 | 1,629 | 167 | 1,409 |
| Primary & secondary | 26 | 347 | 46 | 452 |
| Early latent | 74 | 690 | 64 | 613 |
| Unknown latent | 12 | 213 | 25 | 158 |
| Late latent | 28 | 379 | 32 | 186 |
| Neurosyphilis | 2 | 19 | 2 | 15 |
| Congenital syphilis | 0 | 1 | 0 | 4 |
| Female syphilis | 13 | 160 | 15 | 143 |

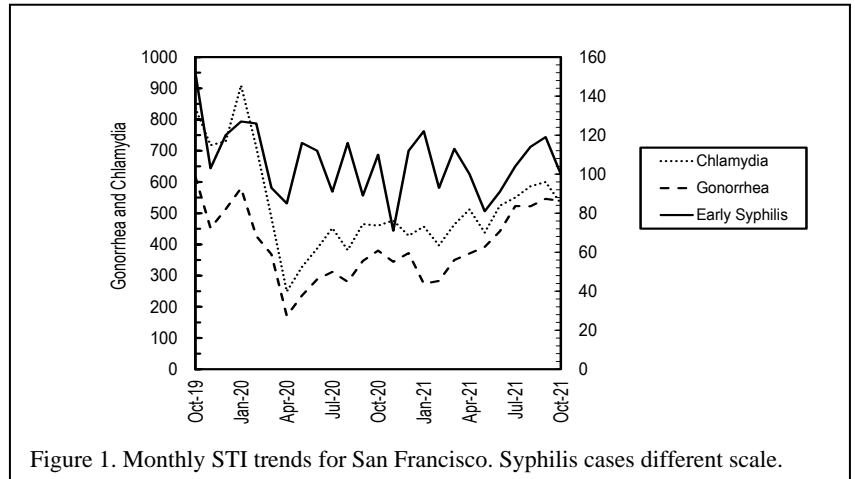


Figure 1. Monthly STI trends for San Francisco. Syphilis cases different scale.

Table 2. Selected STI cases and rates for San Francisco by age and race/ethnicity, 2021 through October only. Rates equal cases per 100,000 residents per year based on 2010 US Census Data.

| | (All races) | | Asian/PI | | African American | | Hispanic | | White | |
|---------------------|-------------|-------|----------|-------|------------------|---------|----------|-------|-------|-------|
| | cases | rate | cases | rate | cases | rate | cases | rate | cases | rate |
| <i>All ages</i> | | | | | | | | | | |
| Chlamydia | 5,059 | 753.9 | 556 | 251.1 | 592 | 1,518.6 | 849 | 836.6 | 1,322 | 470.1 |
| Gonorrhea | 4,242 | 632.2 | 395 | 178.4 | 567 | 1,454.4 | 783 | 771.6 | 1,547 | 550.1 |
| Early syphilis | 1,037 | 154.5 | 122 | 55.1 | 122 | 313.0 | 248 | 244.4 | 405 | 144.0 |
| <i>Under 20 yrs</i> | | | | | | | | | | |
| Chlamydia | 368 | 794.3 | 27 | 146.3 | 91 | 2,321.9 | 63 | 597.5 | 32 | 313.2 |
| Gonorrhea | 97 | 209.4 | 8 | 43.4 | 28 | 714.4 | 15 | 142.3 | 11 | 107.7 |
| Early syphilis | 4 | 8.6 | 0 | 0.0 | 0 | 0.0 | 3 | 28.5 | 0 | 0.0 |

Table 3. HIV testing among City Clinic patients, October, 2021.

| | 2021 | | 2020 | |
|---------------------|-------|-------|-------|-------|
| | month | YTD | month | YTD |
| Tests | 331 | 2,788 | 227 | 2,269 |
| Antibody positive | 5 | 30 | 1 | 32 |
| Acute HIV infection | 1 | 5 | 0 | 1 |

Note: All statistics are provisional until the annual report is released for the year. Morbidity is based on date of diagnosis. Totals for past months may change due to delays in reporting from labs and providers.

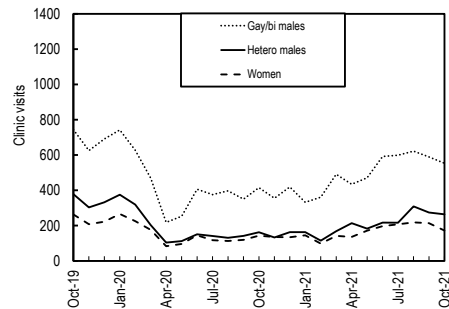


Figure 2. City Clinic visits by gender and orientation.

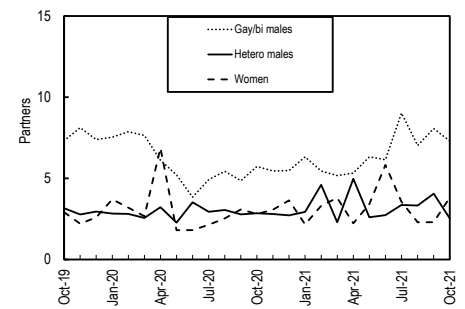


Figure 3. Average number of recent* sex partners for City Clinic visits by gender and sexual orientation.

*Recall period is 3 months.

STI Clinical Update webinar slides and recording now on SF City Clinic website

The 2021 STI Clinical Update webinar was hosted jointly by San Francisco City Clinic (SFDPH) and the California Prevention Training Center on November 4th, 2021. While traditionally held in person, this year's event was offered virtually for the first time.

The morning started off with SF STD Controller and City Clinic Medical Director, Stephanie Cohen, MD, [highlighting important HIV and STI trends](#) over the past year. She emphasized the impact of COVID-19 on HIV and STI screening, prevention and epidemiology and got us all thinking about innovations and opportunities in HIV and STI prevention. Next, Kelly Johnson, MD presented an in-depth, yet succinct, [introduction to syphilis](#) that generated many audience questions. Ina Park, MD then brought us up to speed on the updated [CDC STI Treatment Guidelines](#) released in July 2021. During this [case-based talk](#), Dr. Park emphasized changes in the management of trichomoniasis and *Mycoplasma genitalium*, as well as reviewing updates to the five P's of taking a sexual history, STI screening recommendations, and expedited partner therapy. The day's session was concluded with a lively [case panel](#) moderated by Oliver Bacon, MD. The panel members discussed their approach to several challenging cases, including: proctitis, ocular syphilis, PrEP, and interpreting syphilis serologies.

For those who were not able to attend or want to review the talks, you can find the slides and a link to the [live recording](#) (3.5 hours total) on the SF City Clinic website: <https://www.sfcityclinic.org/providers/updates-alerts>.