

San Francisco Children's Medical Services (CMS) Programs



**Community and Public Health Committee
August 15, 2017**

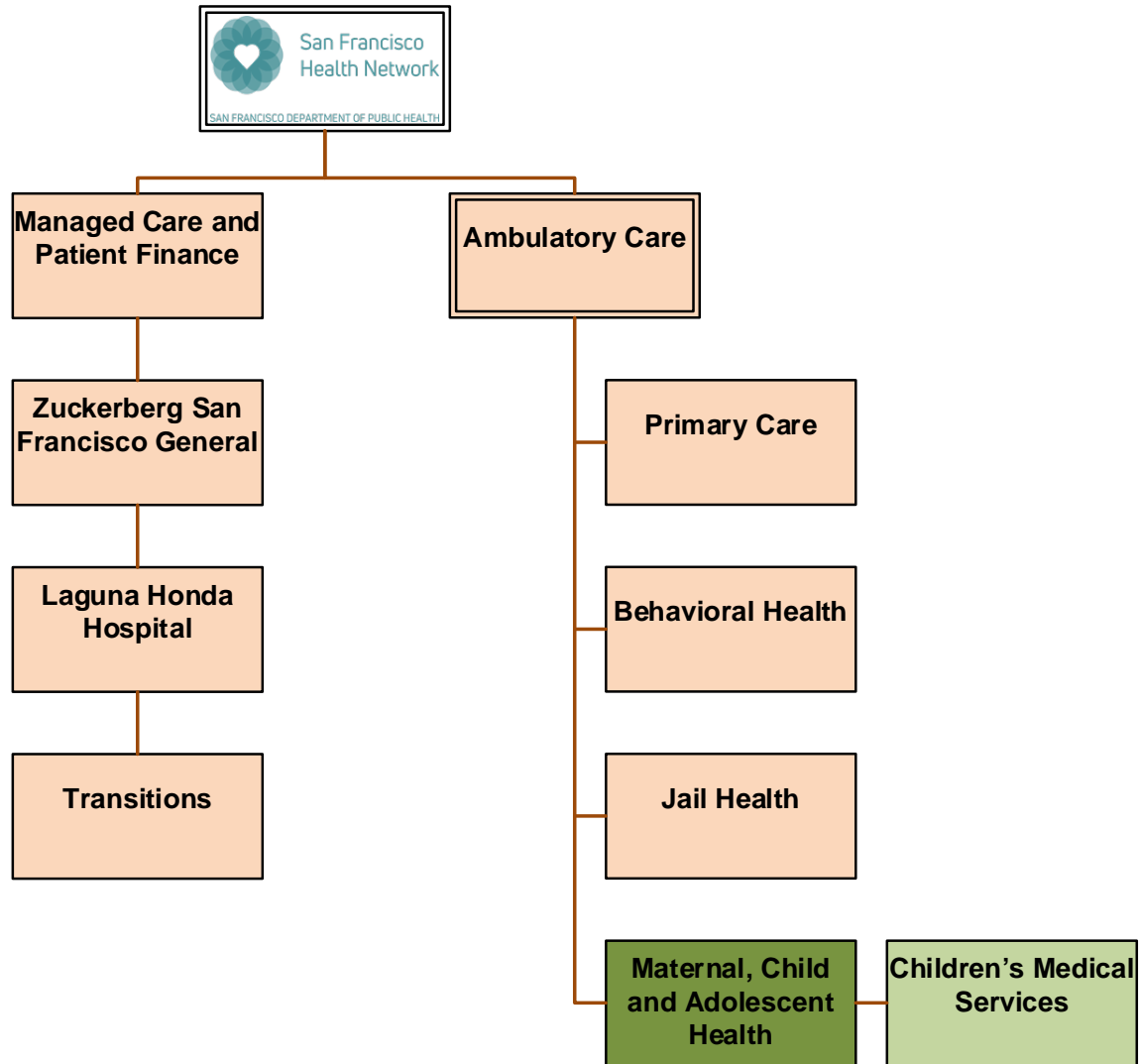


San Francisco
Health Network

SAN FRANCISCO DEPARTMENT OF PUBLIC HEALTH

Maternal, Child and Adolescent Health Section

Organizational Chart



Overview

Children's Medical Services



- **Child Health and Disability Prevention (CHDP)**
- **Family & Children's Services Public Health Nursing (PHN) Unit**
 - Health Care Program for Children in Foster Care (HCPCFC)
 - Substance Abuse/HIV Infant Program
 - Birth to Five Home Visiting
 - PHN Assessment
 - SafeCare
 - Family Treatment Court
- **California Children's Services (CCS)**
 - Medical Therapy Program
 - Pediatric Palliative Care Program



Frameworks

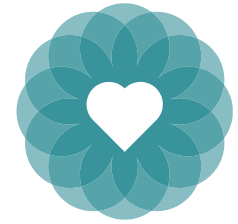


- **Lifecourse Perspective**
- **Trauma Informed Care**
 - Adverse Childhood Experiences (ACEs)
 - Safety, Stability
 - Stress
- **Protective Factors**
 - Parental Resilience
 - Concrete Support in Times of Need
 - Social Connections
 - Knowledge of Child Development
 - Social and Emotional Competence of Children



CHDP

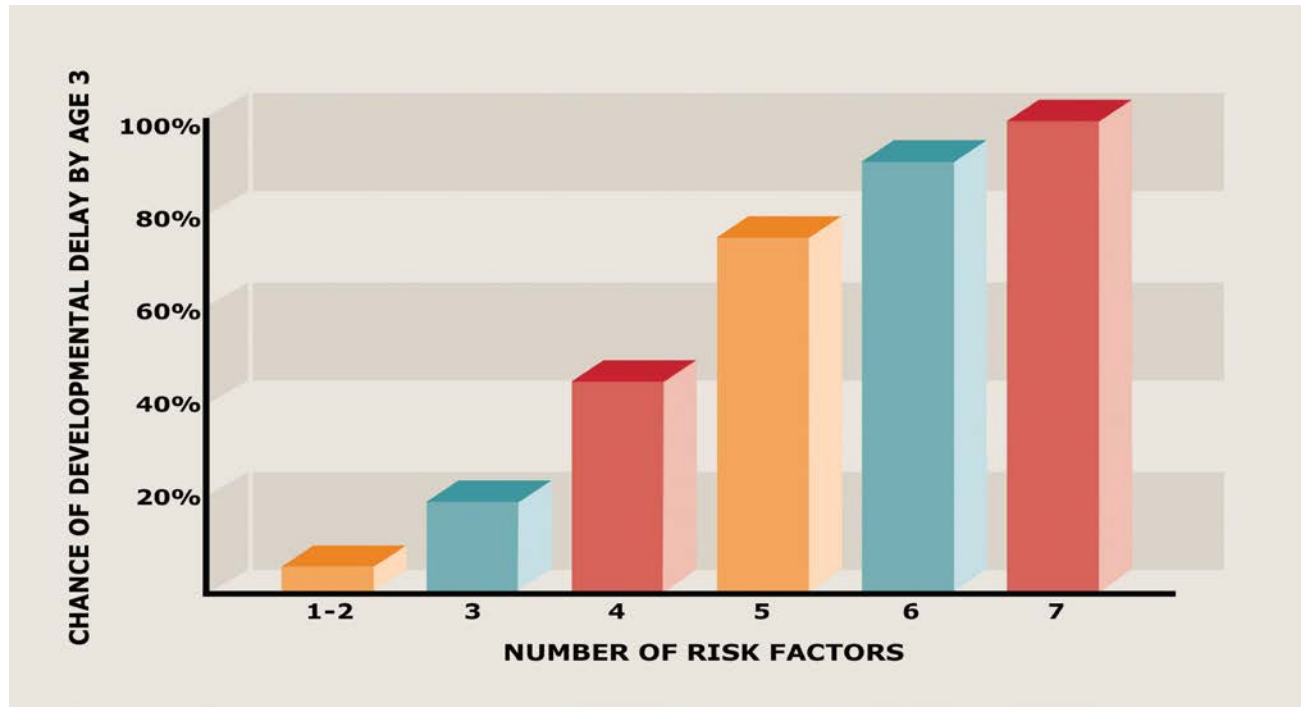
Universal Developmental Screening



- American Academy of Pediatrics Standard of Care
- Early Identification of Developmental Concerns Leads to Referral and Linkage to Early Intervention Services.
- Help Me Grow



Importance of Developmental Screening for At Risk Populations



San Francisco Child Welfare Allegation Data



Children with one or more Allegations
Apr 1, 2016 to Mar 31, 2017, San Francisco

Allegation Type	Substantiated
	n
Sexual Abuse	20
Physical Abuse	53
Severe Neglect	17
General Neglect	411
Exploitation	2
Emotional Abuse	28
Caretaker Absence/Incapacity	48
At Risk, Sibling Abused	39
Total	618

Child Welfare

Health Care Program for Children in Foster Care (HCPCFC)



**Child Welfare
Services**

Foster Care Services

Comprehensive Health Care Coordination for Foster Care and Probation:

- Assurance Of Medical & Dental Preventive Care
- Assurance of Developmental Screening
- Health & Education Passport (HEP)
- Transition planning

Child Welfare

Substance Abuse/HIV Infant Program



- SA/HIV Infant Program 40 Hour Core Training
- ABCs of Baby Basics
- Home Visit and Assessment
- Foster Parent Support Group



Child Welfare Home Visitation



- **Birth to Five**

- PHN Assessment and Developmental Screening
- Referral and Follow Up Care Coordination For Early Intervention Services As Needed

- **SafeCare**

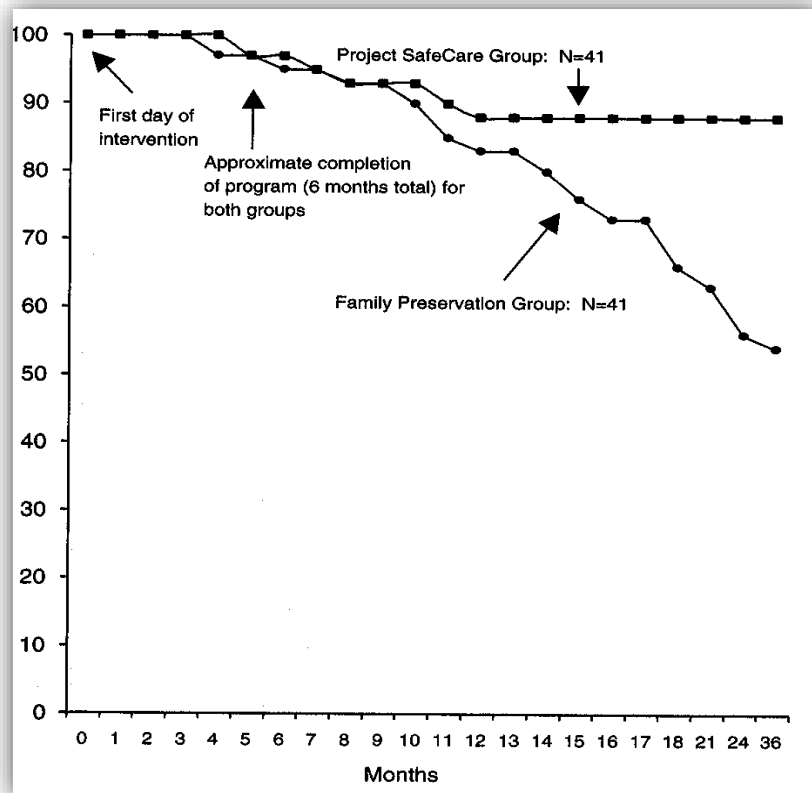
- Prevention Focused
- Evidence Based, Intensive In-home Parent Training
- Reducing Recidivism
- Family Treatment Court Collaboration



Does SafeCare prevent child maltreatment incidents for families?



Families followed ~3 years: 75%
reduction in CPS re-reports



- 82 Families
- CPS reports over 3 years
 - SafeCare: 15%
 - Family Preservation: 44%
- 75% reduction

CCS

Access to Dental Care for Children and Youth with Special Health Care Needs (CYSHCN): Increased Cost & Impacted ED's/Hospitals



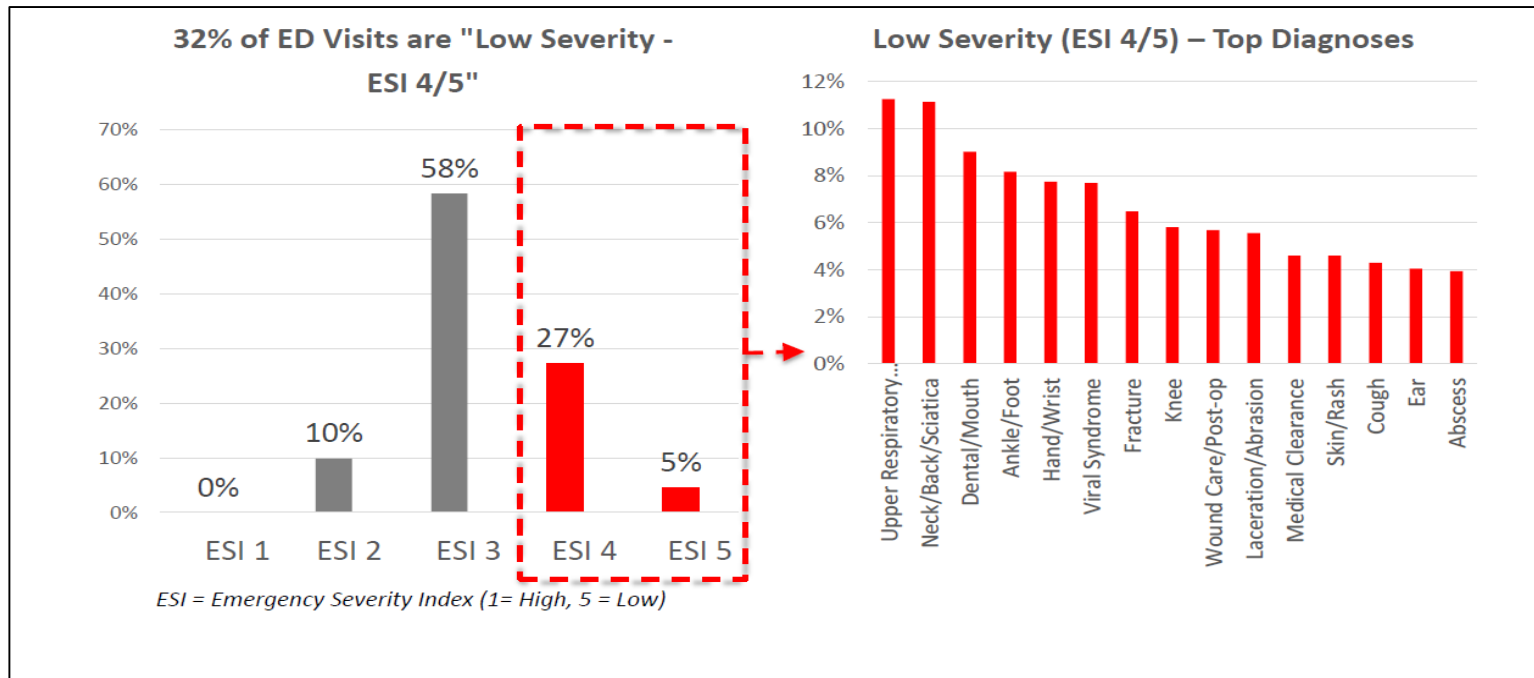
- **July 2009 - Calif Medicaid Dental Coverage ELIMINATED**
 - 68% increase in average Medi-Cal Dental costs – ER Dental Care





Access to Dental Care for CYSHCN: Increased Cost & Impacted ED's/Hospitals

Dental - ZSFGH ED – 9% of Low Severity



CCS

Access to Dental Care for CYSHCN

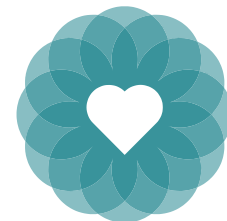


❖ **S.N.A.D. WORKGROUP**

- ❖ Special Needs Anesthesia Dentistry SFGH Clinic
- ❖ SF's Oral Health Leaders, GGRC, & CDA

❖ **Collaborating with UOP**

- ❖ Virtual Dental Home for our Medical Therapy clients



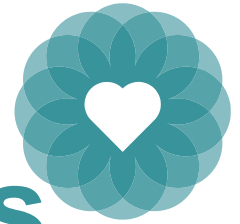
Adequate Transition Planning:

- *Reduces Medical Complications*
- *Improves Patient-Reported Outcomes*
- *Greater Adherence to Care*
- *Improves Continuity of Care*
- *Positive Patient Experience*
- *Lower Cost*



- ❖ The SF C2A Transition Work Group
- ❖ CCS Partnering with San Francisco Health Plan

San Francisco Children's Medical Services



“Ensure low income children, especially those at risk and with special health care needs, receive the necessary and appropriate health care services to protect, promote and improve their health and well being.”



Thank you!



San Francisco
Health Network

SAN FRANCISCO DEPARTMENT OF PUBLIC HEALTH